

Precautions for Product Use

- When selecting the output current and voltage of the product, leave an appropriate margin; it is better to have a larger margin rather than too small.
- When wiring the input control terminal of the solid - state relay, pay attention to the voltage value and polarity. If the actual control voltage is higher than the rated voltage, an appropriate resistor can be connected in series in the control circuit so that the obtained control current is sufficient to start the product.
- Products with a working current below 5A should be installed as close as possible to a heat sink with good ventilation or a place where cooling air can reach.
- Products with a working current above 10A must be installed with a heat sink, and thermal conductive silicone grease should be applied between the relay and the heat sink for good heat dissipation. When the surface temperature of the heat sink approaches 60° C, forced air cooling or water cooling should be adopted.
- In the output circuit, over - voltage and over - current protection measures must be taken (e.g., for over - voltage protection: 470-500V is selected for 220VAC, 750-780V is selected for 380VAC; for over - current protection, fast - blow fuses should be connected).

Address: No. 28, Latitude 19th Road, Economic Development Zone, Yueqing City, Zhejiang Province

Tel: 0577 - 62735555

Website: <http://www.xinling.com>

Postal Code: 325600

Fax: 0577 - 62722963

E - mail: C-Lin@xinling.com

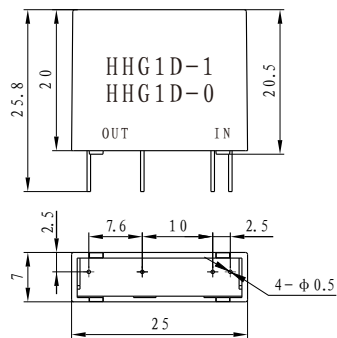
Instruction Manual for HHG1D Series Miniature Solid - State Relays

C-Lin 欣灵电气股份有限公司
XINLING ELECTRIC CO., LTD

Small Single - row AC Solid - State Relay HHG1D Series 1-2A

Input Parameters				
Control Voltage (VDC)	Control Current (mA)	Start - up Voltage (VDC)	Start - up Current (mA)	Turn - off Voltage (VDC)
3-8	<25	3	≤8	≤1.5
8-15	<25	8	≤8	≤2.5
15-32	<25	15	≤8	≤5
Output Parameters				
Output Voltage (VAC)	Output Current (A)	Dielectric Withstand Voltage (VAC)	On - state Voltage Drop (VAC)	Operating Temperature (° C)
AC: 40-440	1-2	≥2500	<1.5	-20~70
DC: 5-60	1-2	≥2500	<1.5	-20~70
Safe Operating Conditions				
Cooling Conditions	Circuit Protection		Safe Operating Coefficient of Working Current	
1 - 5A: No heat sink required, install in a well - ventilated place. 10 - 20A: The product is cooled by natural air. 30 - 200A: Add forced air cooling or water cooling.	Overvoltage	Overcurrent	Resistive Load	Inductive Load
	RC, MOV	Fast - acting fuse	60%	40%

Installation Dimensions (Unit: mm)



Wiring Diagram

