

I. Overview

The JS11S time relay (hereinafter referred to as the relay) is an energized delay-type time relay. It is suitable for use as a delay element in control circuits with AC 50Hz, rated operating voltage of 380V and below, or DC operating voltage of 24V, and it connects or disconnects the circuit indirectly according to the preset time.

This relay meets the relevant requirements of GB/T 14048.5.

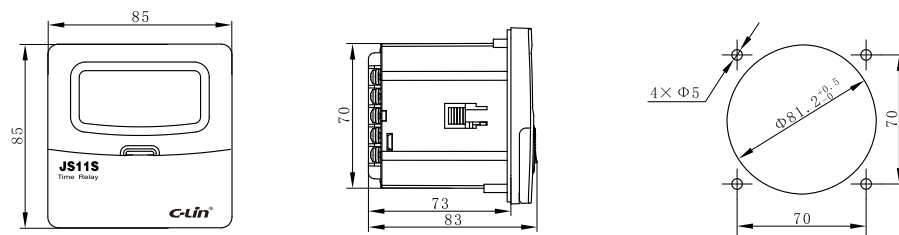
II. Model and Its Meaning

Table

Product Model	JS11S
Display Mode	Digital Display Time Relay
Working Power Supply (Control Power Supply Voltage)	AC380V, 220V, 110V, 36V, 24V 50Hz; DC24V
Allowable Voltage Fluctuation Range	(85%~110%) U _e
Delay Range	0.01s~99990h, 0.01s~9.99s, 0.01s~99.99s
Repeat Error	When the delay range is >1s, Er 1%; When the delay range is <1s, Dr 50ms
Working Mode	Energized Delay Type
Number of Contacts	1 group of instantaneous conversion contacts and 2 groups of delay conversion contacts
Contact Capacity	3A AC250V (Resistive) (Use Category AC-15)
Conventional Heating Current I _{th}	5A
Rated Insulation Voltage U _i	400V

①

. Outline and Installation Dimension Diagram (mm)



. Instructions for Use

1. According to the wiring diagram on the relay shell label, refer to the circuit example in Article 8 to connect the product to the control circuit.
2. Preset the delay time with the DIP switch on the panel before use. Changing the delay setting value during the energized delay process is invalid.
3. After power is turned on, when the delay reaches the preset time, the relay conversion is executed to realize timing control.
4. The interval between repeated starts of the relay should be 0.5s.
5. Reset Function: Connect the reset terminal at any time, the relay timing returns to zero and restores to the initial state.
6. Pause Function: Connect the pause terminal at any time, the timing pauses, displays and keeps the current time, and continues timing after disconnecting the pause terminal.
7. In environments with strong electric fields and strong electric pulse fluctuations, and when the reset and pause connection wires are long, please use shielded wires.
8. Do not input voltage or ground to the reset and pause terminals to avoid damaging the product.

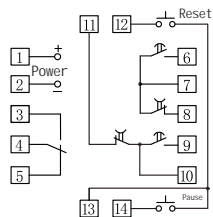
Note: The main circuit power supply must be cut off before installation or disassembly.

③

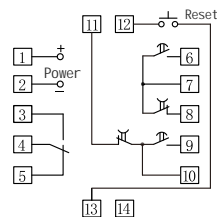
Table (Continued)

Rated Impulse Withstand Voltage U _{imp}	2.5kV
Ambient Temperature	-5°C ~ 40°C
Pollution Degree	Class 3
Altitude	Not exceeding 2000m
Humidity	When the maximum temperature at the installation site is 40°C, the relative humidity of air shall not exceed 50%. Higher relative humidity is permissible at lower temperatures, e.g., up to 90% at 20°C. Special measures shall be taken for condensation occasionally caused by temperature changes.
Installation Method	Panel Mounting

. Wiring Diagrams



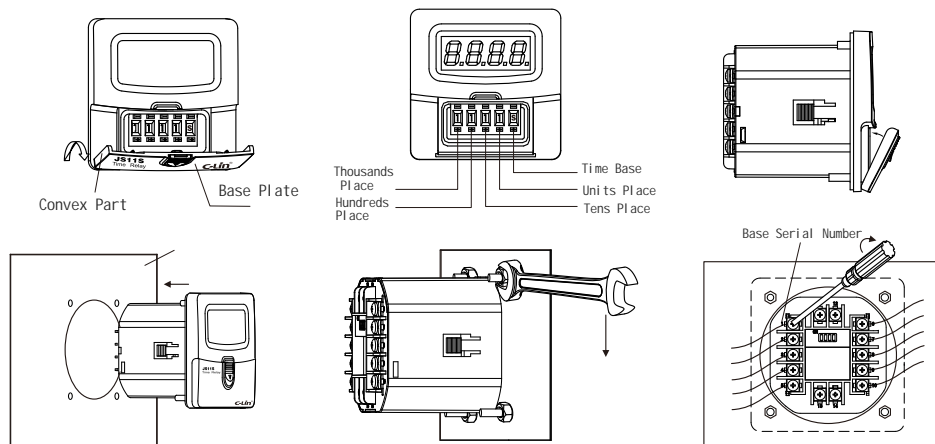
0.01s~99990h



0.01s~9.99s, 0.01s~99.99s

②

. Installation Method

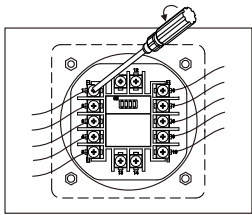


(1) Panel Mounting: Install the relay into the panel.

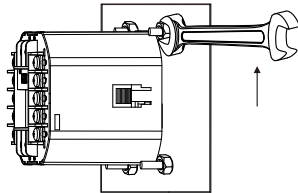
(2) Panel Mounting: Install the mounting nut and tighten it with a wrench.

(3) Panel Mounting: Connect the wires according to the base serial number and tighten the wiring screws.

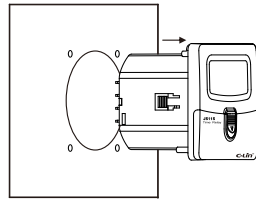
④



(4) Panel Mounting Disassembly: Loosen the wiring screws and remove the wires.



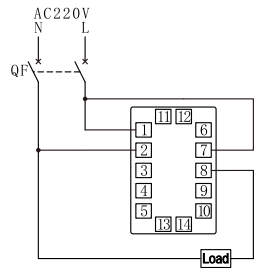
(5) Panel Mounting Disassembly: Use a wrench to remove the mounting screw nuts respectively.



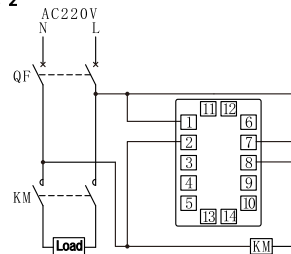
(6) Panel Mounting Disassembly: Pull out the relay.

. Application Circuit Examples

Example 1



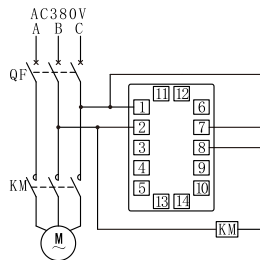
Example 2



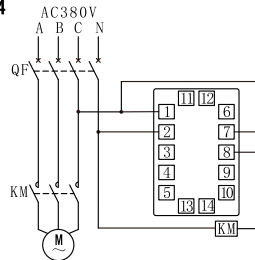
⑤

⑦

Example 3



Example 4



1. For single-phase loads, if the resistive current of the load $\leq 3A$ or the inductive current $\leq 0.5A$, the relay controls directly, and the wiring refers to Example 1; if the resistive current of the load $>3A$ or the inductive current $>0.5A$, the relay expands capacity through an AC contactor, and the wiring refers to Example 2; for three-phase loads, when the power supply of the AC contactor and relay is AC380V, the wiring refers to Example 3; when the power supply of the AC contactor and relay is AC220V, the wiring refers to Example 4.

2. The function of the illustrated relay is: when the power is turned on, the load or KM (AC contactor) is energized, and when the delay reaches the preset value, the load or KM (AC contactor) is de-energized.

Note 1: The load can be a street lamp or a bulb, and can be directly connected to the two wires at the street lamp or bulb socket (as shown in Example 1).

Note 2: KM is the coil of an AC contactor, and terminals A1 and A2 can be wired according to Example 2, Example 3, and Example 4.

Note 3: The working power supply of the relay and KM in Example 3 is AC380V. Attention should be paid to the voltage class of the selected product.

. Ordering Information

The product model, delay range, voltage class, and quantity should be specified. If there are special requirements, they should be noted separately.

For example: JS11S AC220V 100 pieces.

③



C-Lin[®]
欣灵电气股份有限公司
XINLING ELECTRICAL CO., LTD.

Address: No. 328, Weishi 19th Road, Yueqing Economic Development Zone, Zhejiang Province
Tel: 0577-6273 5556 Fax: 0577-6272 2963
Website: www.xinling.com E-mail: C-Lin@xinling.com
Technical Consultation: 400-8236-776



C-Lin 欣灵

使用说明书
Products Instructions

JS11S
Time Relay

Thank you very much for using the C-Lin Brand Time Relay. Please read the Instruction Manual before using the product!

01A106P1