



## LXW-5

### Series Micro Switches

Thank you very much for using the C-Lin Brand micro switches. Please read the instruction manual before use!

23A003E1

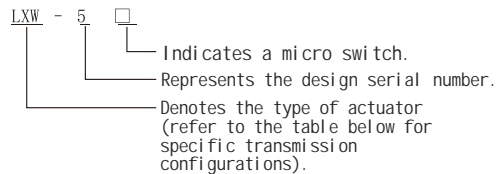
## I. Overview

The LXW-5 series micro switches are widely applied in food machinery, automatic packaging machines, machine tools, conveying machinery, automatic production line control, and light industrial machinery with strict protection requirements.



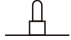








## II. Main Features

- Rated Switching Capacity: 15A
  - 15A at 125VAC; 250VAC
  - 1/8HP at 125VAC; 1/4HP at 250VAC
  - 1/2A at 125VDC; 1/4A at 250VDC
- High Precision & Long Service Life
  - Operating Position (OP) precision reaches up to  $\pm 0.5\text{mm}$  (for pin-button models).
  - Mechanical service life: Over 20 million cycles (for pin-button models).
- Versatile Transmission Modes: Customizable transmission levers or devices are available per customer requirements.
- Convenient Wiring: M4 screw terminals offer optional washers (anti-slip toothed washer [-B3], cup washer [-B], spring washer [-B5]) for flexible selection.
- Enhanced Safety: Terminal protective covers are optionally available.

## III. Model Designation and Its Interpretation



Various Transmission Configurations

Transmission Type	Schematic Diagram	Transmission Type	Schematic Diagram
Pin-button Type (LXW-511Z)		Reed Roller Lever Type (LXW-515S)	
Slim Plunger Button Type (LXW-515C)		Lever Type (LXW-511N1, LXW-511N2)	
Short Plunger Button Type (LXW-511D)		Roller Lever Type (LXW-511G1, LXW-511G2)	
Panel-mounted Plunger Type (LXW-511M)		Unidirectional Roller Lever Type (LXW-515B)	
Panel-mounted Roller Plunger Type (LXW-511Q1, LXW-511Q2)		Micro Pivot Cable Lever Type (LXW-515R)	
Reed Lever Type (LXW-515X)			

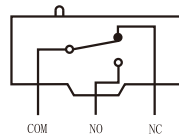
### IV. Ratings

Rated Voltage	Non-inductive Load			Inductive Load			Inrush Current (A)			
	Resistive Load		Lamp Load	Inductive Load		Motor Load				
	NC	NO	NC	NO	NC	NO	NC	NO		
125VAC	15		3	1.5	15		5	2.5	30 Max	15 Max
250VAC	15		2.5	1.25	15		3	1.5		
500VAC	3		1.5	0.75	2.5		1.5	0.75		
8VDC	15		3	1.5	15		5	5		
14VDC	15		3	1.5	10		5	5		
30VDC	6(2)		3	1.5	5		5	5		
125VDC	0.4		0.4	0.4	0.05		0.05	0.05		
250VDC	0.2		0.2	0.2	0.03		0.03	0.03		

### V. Performance

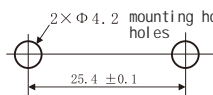
Operating Speed	0.01mm ~1m/s	
Operation Frequency	Mechanical: 240 cycles/min	Electrical: 20 cycles/min
Contact Resistance	15m (initial)	
Insulation Resistance	100M (under DC 500V)	
Withstand Voltage	Between non-consecutive terminals: 1,000VAC, 50/60Hz, lasting 1 minute Between current-carrying parts & ground: 2,000VAC, 50/60Hz, lasting 1 minute	
Vibration	(10Hz ~ 20Hz): 1.5mm double amplitude, endurance without false operation (10Hz ~ 55Hz).	
Shock	Mechanical endurance: 1,000m/sec <sup>2</sup> Endurance without false operation: 300m/sec <sup>2</sup>	
Ambient Temperature	General type: -25 ~+80	Sealed type: -15 ~+80
Ambient Humidity	General type: 85%RH	Sealed type: 95%RH
Service Life	Mechanical: 1,000,000 cycles-	Electrical: 300,000 cycles
Protection Grade	IP65	

### VI. Contact Configuration

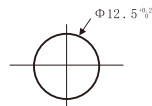


Changeover Type

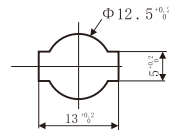
### VII. Installation Diagrams



Mounting Holes and Machining Dimensions

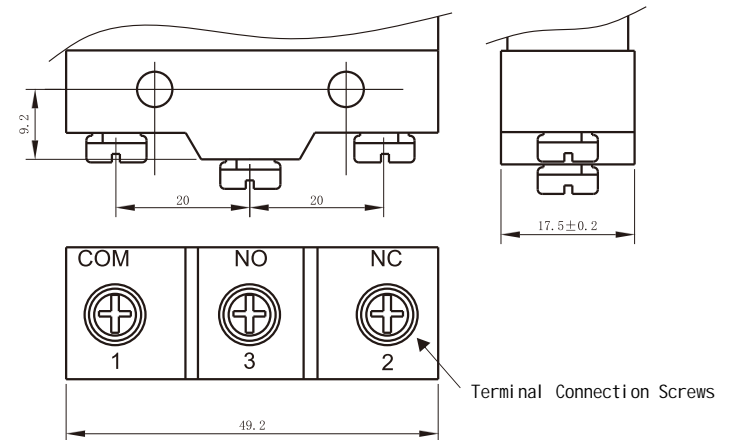


Panel-mounted Plunger Type



Panel-mounted Roller Plunger Type

### VIII. Dimensional Drawing of Terminal Connection Area

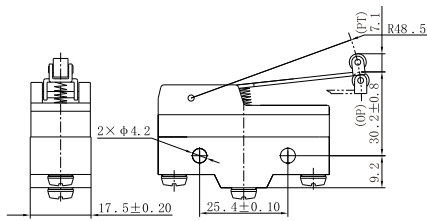


# IX. Appearance and Dimensions



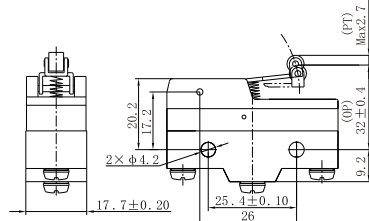
**Operating Characteristics**  
 Operating Force (max OF): 160g  
 Reset Force (min RF): 22g  
 Pre-travel (PT, max): 7.1mm  
 Differential Travel (MD, max): 1.02mm  
 Over-travel (OT, min): 4mm  
 Free Position (FP): 36.5mm  
 Operating Position (OP): 30.2±0.8mm

LXW-511G1



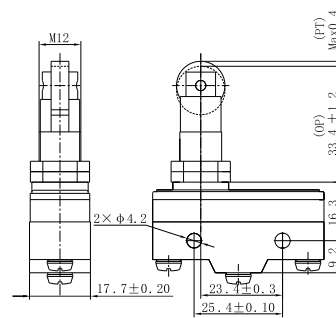
**Operating Characteristics**  
 Operating Force (max OF): 160g  
 Reset Force (min RF): 42g  
 Pre-travel (PT, max): 2.7mm  
 Differential Travel (MD, max): 0.5mm  
 Over-travel (OT, min): 2.4mm  
 Operating Position (OP): 30.2±0.4mm

LXW-511G2



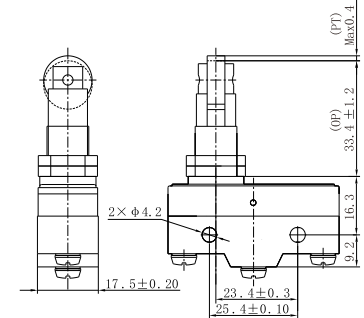
**Operating Characteristics**  
 Operating Force (max OF): 350g  
 Reset Force (min RF): 114g  
 Pre-travel (PT, max): 0.4mm  
 Differential Travel (MD, max): 0.05mm  
 Over-travel (OT, min): 3.58mm

LXW-511Q1



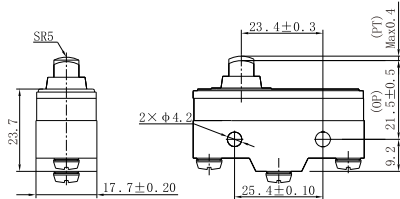
**Operating Characteristics**  
 Operating Force (max OF): 350g  
 Reset Force (min RF): 114g  
 Pre-travel (PT, max): 0.4mm  
 Differential Travel (MD, max): 0.05mm  
 Over-travel (OT, min): 3.58mm

LXW-511Q2



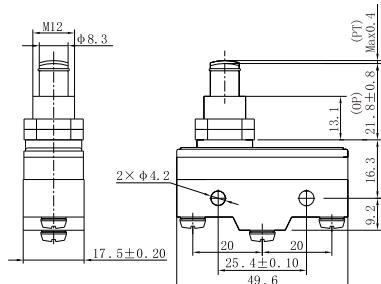
**Operating Characteristics**  
 Operating Force (max OF): 350g  
 Reset Force (min RF): 114g  
 Pre-travel (PT, max): 0.4mm  
 Differential Travel (MD, max): 0.05mm  
 Over-travel (OT, min): 1.6mm  
 Operating Position (OP): 21.5±0.5mm

LXW-511D



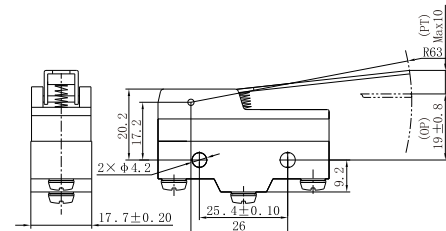
**Operating Characteristics**  
 Operating Force (max OF): 350g  
 Reset Force (min RF): 114g  
 Pre-travel (PT, max): 0.4mm  
 Differential Travel (MD, max): 0.05mm  
 Over-travel (OT, min): 5.5mm

LXW-511M



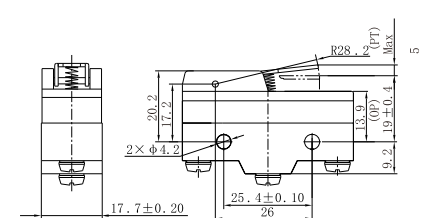
**Operating Characteristics**  
 Operating Force (max OF): 70g  
 Reset Force (min RF): 14g  
 Pre-travel (PT, max): 10mm  
 Differential Travel (MD, max): 1.27mm  
 Over-travel (OT, min): 5.6mm  
 Free Position (FP): 28.2mm  
 Operating Position (OP): 19±0.5mm

LXW-511N1



**Operating Characteristics**  
 Operating Force (max OF): 100g  
 Reset Force (min RF): 28g  
 Pre-travel (PT, max): 5mm  
 Differential Travel (MD, max): 1mm  
 Over-travel (OT, min): 2mm  
 Operating Position (OP): 19±0.4mm

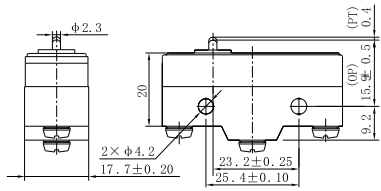
LXW-511N2





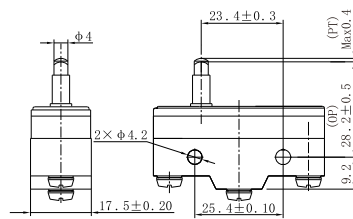
LXW-511Z

**Operating Characteristics**  
 Operating Force (max OF): 350g  
 Reset Force (min RF): 114g  
 Pre-travel (PT, max): 0.4mm  
 Differential Travel (MD, max): 0.05mm  
 Over-travel (OT, min): 0.13mm



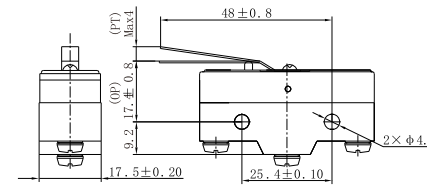
LXW-515C

**Operating Characteristics**  
 Operating Force (max OF): 350g  
 Reset Force (min RF): 114g  
 Pre-travel (PT, max): 0.1mm  
 Differential Travel (MD, max): 0.05mm  
 Over-travel (OT, min): 1.6mm  
 Operating Position (OP): 28.2±0.5mm



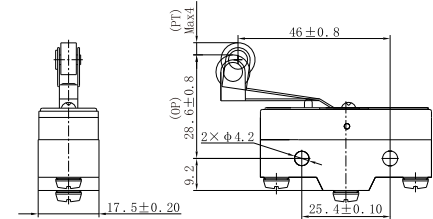
LXW-515X

**Operating Characteristics**  
 Operating Force (max OF): 300g  
 Reset Force (min RF): 50g  
 Pre-travel (PT, max): 4mm  
 Differential Travel (MD, max): 1.3mm  
 Over-travel (OT, min): 1.6mm  
 Free Position (FP): 20.6mm  
 Operating Position (OP): 17.4±0.8mm



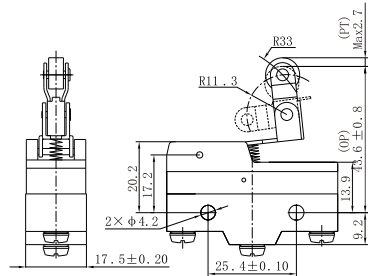
LXW-515S

**Operating Characteristics**  
 Operating Force (max OF): 300g  
 Reset Force (min RF): 50g  
 Pre-travel (PT, max): 4mm  
 Differential Travel (MD, max): 1.3mm  
 Over-travel (OT, min): 1.6mm  
 Free Position (FP): 31.8mm  
 Operating Position (OP): 28.6±0.8mm



LXW-511B

**Operating Characteristics**  
 Operating Force (max OF): 160g  
 Reset Force (min RF): 42g  
 Pre-travel (PT, max): 2.7mm  
 Differential Travel (MD, max): 0.5mm  
 Over-travel (OT, min): 2.4mm  
 Operating Position (OP): 43.1±0.8mm



LXW-515R

**Operating Characteristics**  
 Operating Force (max OF): 10g  
 Reset Force (min RF): 42g  
 Pre-travel (PT, max): 2.7mm  
 Differential Travel (MD, max): 0.5mm  
 Over-travel (OT, min): 2.4mm  
 Free Position (FP): 32.5mm  
 Operating Position (OP): 30.2±0.4mm

