 中国驰名商标 国家高新技术企业



C-Lin
欣灵电气股份有限公司
XINLING ELECTRIC CO., LTD

Address: No. 328, 19th Road, Yueqing Economic Development Zone, Zhejiang Province
Hotline: 0577-62735555 Fax: 0577-62722963
<http://www.xinling.com> www.c-lin.cn Email: C-Lin@xinling.com
Technical Consultation: 0577-62731216



China Well-known Trademark National High-tech Enterprise

C-Lin 欣灵

使用说明书
Products Instructions

LXW-AZ

Series Micro Switch

Thank you very much for using C-Lin Brand Micro Switch. Please read the instruction manual before using the product!

23A001E1

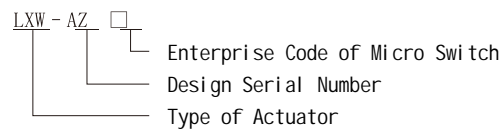
I. Overview

The LXW-AZ Series Micro Switch is widely applicable to food machinery, automatic packaging machines, machine tools, conveying machinery, automatic production line control, and light industry machinery with strict protection requirements.

II. Main Features

- Long Service Life
It adopts a high-efficiency spring structure design, with a mechanical service life of over 10 million cycles.
- High Mechanical Strength, Compact and Lightweight
a) The mounting hole spacing is 25.4 ± 0.1 mm, the same as that of the LXW-5 type micro switch.
b) The shell is made of plastic material with good mechanical properties, capable of withstanding large impacts.
- Dust-proof and Oil-resistant Structural Design
a) The switch body is sealed with compressed rubber rings and diaphragms, maintaining an IP63 protection rating.
b) Products with epoxy resin-sealed terminals can be customized, but the lead wires need to be selected in advance.
- Good Buffering and Shock Absorption for Large Over-travel

III. Model and Its Explanation



IV. Ratings

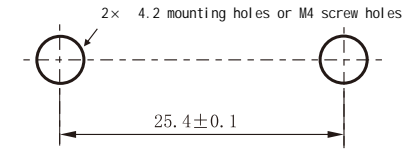
| Rated Voltage | Non-Inductive Load | | | | Inductive Load | | | |
|---------------|--------------------|----|-----------|------|----------------|----|------------|------|
| | Resistive Load | | Lamp Load | | Inductive Load | | Motor Load | |
| | NC | NO | NC | NO | NC | NO | NC | NO |
| 125VAC | 10 | | 3 | 1.5 | 10 | | 5 | 2.5 |
| 250VAC | 10 | | 2.5 | 1.25 | 10 | | 3 | 1.5 |
| 480VAC | 3 | | 1.5 | 0.75 | 2.5 | | 1.5 | 0.75 |
| 8VDC | 10 | | 3 | 1.5 | 6 | | 6 | 5 |
| 14VDC | 10 | | 3 | 1.5 | 6 | | 6 | 5 |
| 30VDC | 8 | | 3 | 1.5 | 6 | | 5 | 2.5 |
| 125VDC | 0.5 | | 0.4 | 0.4 | 0.05 | | 0.05 | 0.05 |
| 250VDC | 0.25 | | 0.2 | 0.2 | 0.03 | | 0.03 | 0.03 |

V. Characteristics

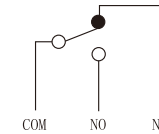
| | |
|-----------------------|---|
| Operating Speed | 0.5mm~0.5m/s |
| Operation Frequency | Mechanical: 120 times/min; Electrical: 20 times/min |
| Contact Resistance | Below 50m (Initial) |
| Insulation Resistance | Above 100M (Below DC500V) |
| Conventional Heating | 10A |
| Electrical Parameters | 380V、220V/1A DC220V/0.3A |
| Withstand Voltage | Between Non-Connected Terminals: 1890V, 50/60Hz, 1min Between Terminals and Non-Live Metal: 2500V, 50/60Hz, 1min Between Terminals and Ground: 2500V, 50/60Hz, 1min |
| Vibration | Malfunction Endurance: 10Hz~55Hz, 1.5mm Double Amplitude |
| Impact | Mechanical Endurance: 1000m/S ² ; Malfunction Endurance: 300m/S ² |
| Operating Environment | Temperature: -10 ~ 80 (No Freezing); Humidity: < 90%RH |
| Service Life | Mechanical: Over 10,000,000 Times (Under Rated OT Value); Electrical: Over 200,000 Times |
| Protection Class | IP63 |

-3-

VI. Installation Diagram



VII. Contact Form



COM: Common Terminal
NO: Normally Open Terminal
NC: Normally Closed Terminal

Wiring Method

1. Use a slotted screwdriver to open the terminal protective cover.
2. Insert the cable through the rubber sleeve on the terminal protective cover.
3. Connect the lead wires to each terminal.
4. Reinstall the terminal protective cover, which can be installed according to the required wire outlet direction.

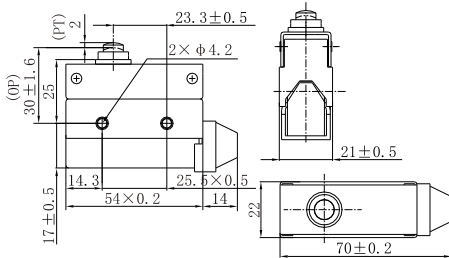
-4-

VIII. Appearance and Dimensions



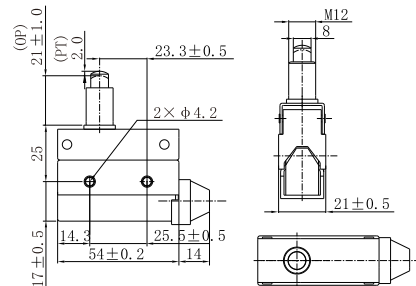
LXW-AZ7100

Operating Characteristics
Operating Force (Max OF): 600g
Reset Force (Min RF): 100g
Pre-travel (PT) Max: 2.0mm
Differential Travel (MD) Max: 0.8mm
Over-travel (OT) Min: 0.8mm
Operating Position (OP): 30.5±0.8mm



LXW-AZ7110

Operating Characteristics
Operating Force (Max OF): 600g
Reset Force (Min RF): 100g
Pre-travel (PT) Max: 2.0mm
Differential Travel (MD) Max: 0.8mm
Over-travel (OT) Min: 5.0mm
Operating Position (OP): 44±1.2mm

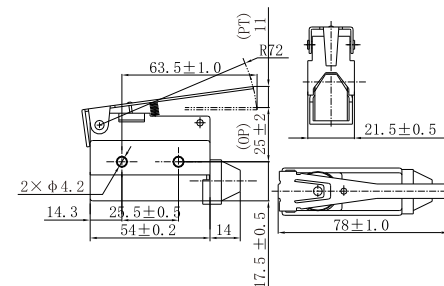


-5-



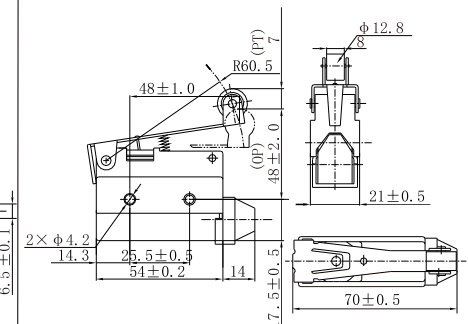
LXW-AZ7120

Operating Characteristics
Operating Force (Max OF): 150g
Reset Force (Min RF): 40g
Pre-travel (PT) Max: 13.5mm
Differential Travel (MD) Max: 3.2mm
Over-travel (OT) Min: 4.0mm
Operating Position (OP): 25±1mm
Free Position (FP): 35mm



LXW-AZ7121

Operating Characteristics
Operating Force (Max OF): 180g
Reset Force (Min RF): 50g
Pre-travel (PT) Max: 11mm
Differential Travel (MD) Max: 2.4mm
Over-travel (OT) Min: 3mm
Operating Position (OP): 40±1mm

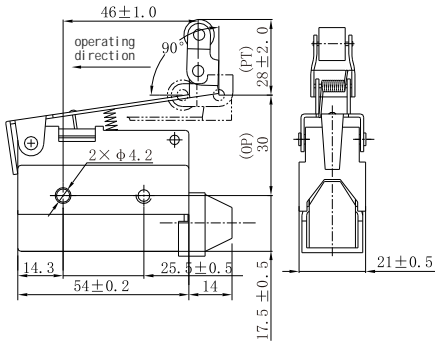


-6-



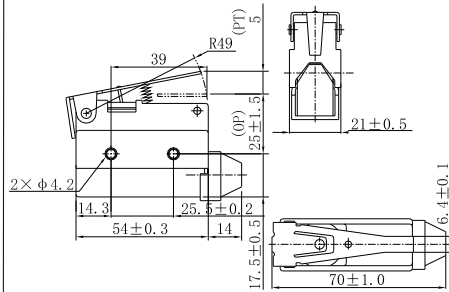
LXW-AZ7124

Operating Characteristics
 Operating Force (Max OF): 200g
 Reset Force (Min RF): 60g
 Pre-travel (PT) Max: 11mm
 Differential Travel (MD) Max: 3.0mm
 Over-travel (OT) Min: 2.4mm
 Operating Position (OP): 50 ± 1.2 mm



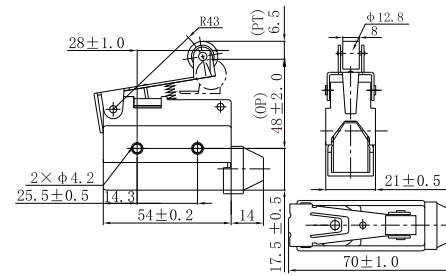
LXW-AZ7140

Operating Characteristics
 Operating Force (Max OF): 220g
 Reset Force (Min RF): 60g
 Pre-travel (PT) Max: 8.5mm
 Differential Travel (MD) Max: 2.0mm
 Over-travel (OT) Min: 2.5mm
 Operating Position (OP): 35 ± 18 mm
 Free Position (FP): 32mm



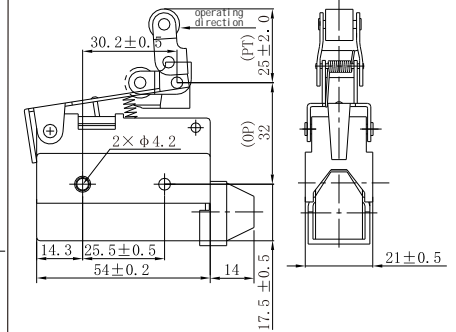
LXW-AZ7141

Operating Characteristics
 Operating Force (Max OF): 240g
 Reset Force (Min RF): 80g
 Pre-travel (PT) Max: 6.5mm
 Differential Travel (MD) Max: 1.5mm
 Over-travel (OT) Min: 2.0mm
 Operating Position (OP): 40 ± 1 mm
 Free Position (FP): 46mm



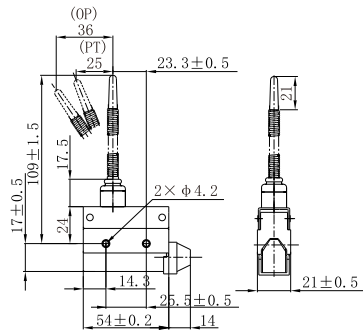
LXW-AZ7144

Operating Characteristics
 Operating Force (Max OF): 280g
 Reset Force (Min RF): 100g
 Pre-travel (PT) Max: 6.5mm
 Differential Travel (MD) Max: 1.5mm
 Over-travel (OT) Min: 2.0mm
 Operating Position (OP): 50 ± 1.2 mm
 Free Position (FP): 56



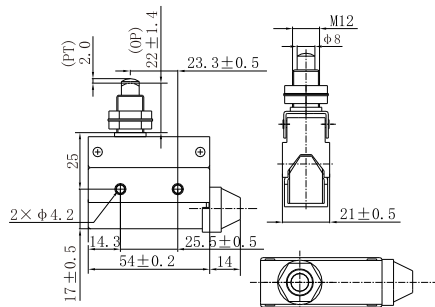
LXW-AZ7166

Operating Characteristics
 Operating Force (Max OF): 120g
 Pre-travel (PT) Max: 11mm
 Differential Travel (MD) Max: 250mm



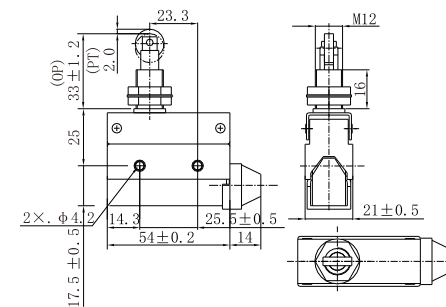
LXW-AZ7310

Operating Characteristics
 Operating Force (Max OF): 600g
 Reset Force (Min RF): 100g
 Pre-travel (PT) Max: 2.0mm
 Differential Travel (MD) Max: 0.8mm
 Over-travel (OT) Min: 6.0mm
 Operating Position (OP): 21.8 ± 1.2 mm



LXW-AZ7311

Operating Characteristics
 Operating Force (Max OF): 600g
 Minimum Reset Force (RF): 100g
 Maximum Pre-travel (PT): 2.0mm
 Maximum Differential Travel (MD): 0.8mm
 Minimum Over-travel (OT): 6.0mm
 Operating Position (OP): 33.3 ± 1.2 mm



LXW-AZ7312

Operating Characteristics
 Operating Force (Max OF): 600g
 Minimum Reset Force (RF): 100g
 Maximum Pre-travel (PT): 2.0mm
 Maximum Differential Travel (MD): 0.8mm
 Minimum Over-travel (OT): 6.0mm
 Operating Position (OP): 33.3 ± 1.2 mm

